

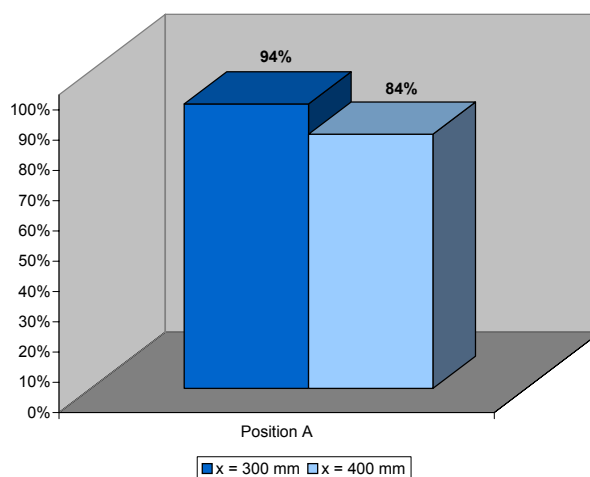
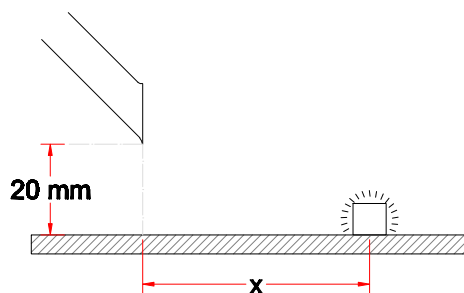


## System 75 - Chemical resistant (PP)

- Suction pen recommended for small concentrated sources of pollution
- High efficiency as the suction pen gets close to the source without obstructing the work process
- Tube and tip made of chemical resistant polypropylene (PP)
- With funnel in order to increase the capture efficiency
- Length: 250 mm
- Tip colour : white (-5) or red (-4)



## Capture efficiency



## Drawing

