

# CONNECTION – WALL BRACKET



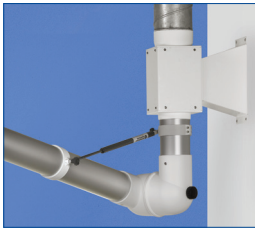
## Wall Bracket 2-100-203 & 2-100-203-050

### Duct connection to wall bracket.

Easy and simple connection to extraction duct Ø125 mm.

For all wall/ceiling mounted System 100 extraction arms.

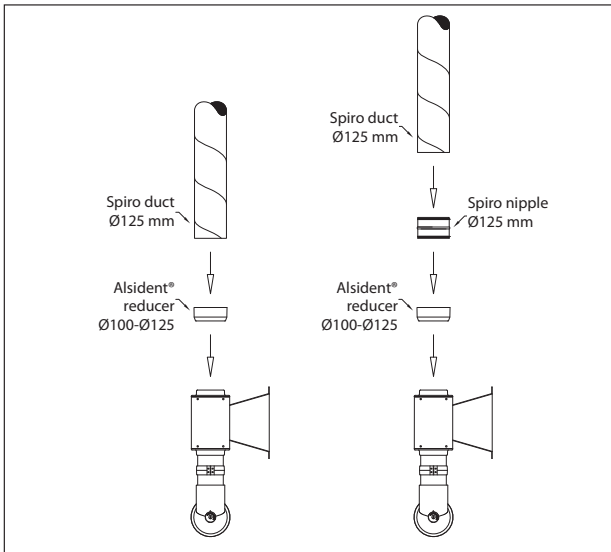
Connection with Alsident® reducer 4-100125 (included).



### Two options:

- with reducer to spiro duct Ø125 mm
- with reducer to nipple and spiro duct Ø125 mm

## TWO CONNECTION OPTIONS



Connection with Alsident® reducer 4-100125 to spiro duct Ø125 mm with and without nipple.