

CONNECTION – WALL BRACKET



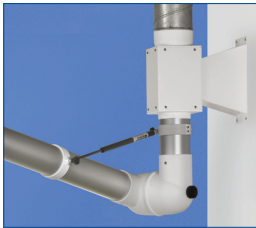
Wall Bracket 2-100-203 & 2-100-203-050

Duct connection to wall bracket.

Easy and simple connection to extraction duct Ø125 mm.

For all wall/ceiling mounted System 100 extraction arms.

Connection with Alsident® reducer 4-100125 (included).

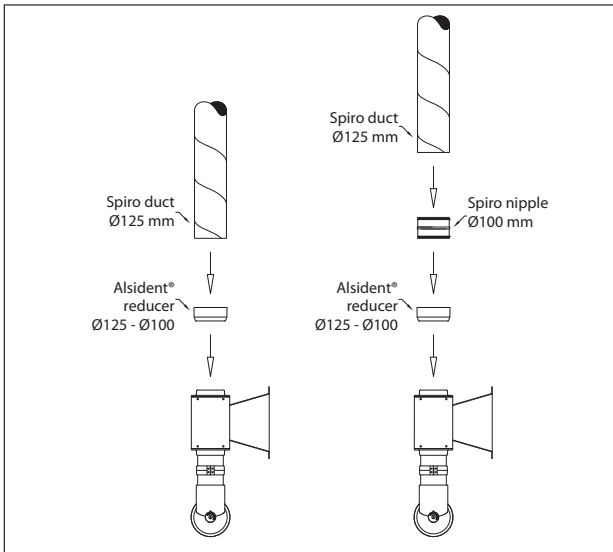


Two options:

- with reducer to spiro duct Ø125 mm

- with reducer to nipple and spiro duct Ø125 mm

TWO CONNECTION OPTIONS



Connection with Alsident® reducer 4-100125 to spiro duct Ø125 mm with and without nipple.